



Addition

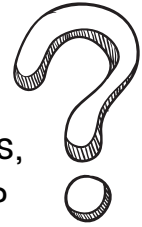
Name:

Date:

Mental Addition

Solve the riddle.

What can run but never walks, has a mouth but never talks, has a head but never weeps, has a bed but never sleeps?



$3 + 25 + 7$

i

$50 + 8 + 12$

a

$35 + 65$

v

$250 + 750$

r

$437 + 40$

e

70

1000

35

100

477

1000



Addition

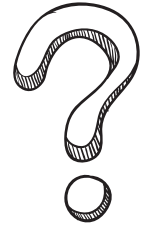
Name:

Date:

Mental Addition

Solve the riddle.

What can fill a room but takes up no space?



$62 + 38$

g

$108 + 90 + 2$

l

$60 + 205$

h

$550 + 30$

t

$14 + 20 + 16$

i

200

50

100

265

580