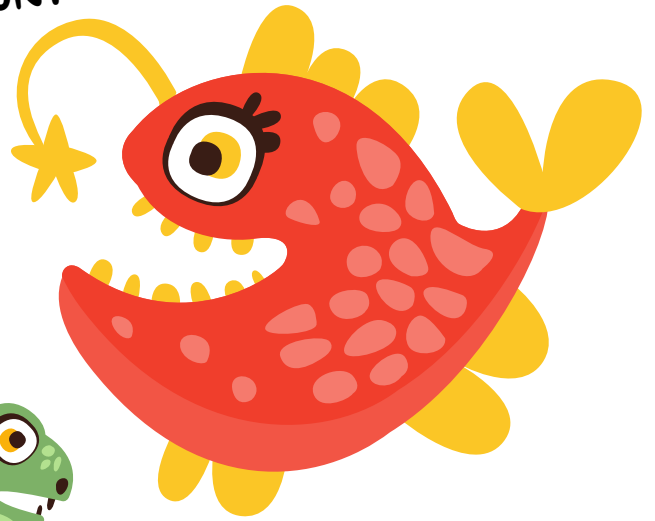


# Aquarium

## SCAVENGER HUNT



Clownfish



Angler Fish



Eel



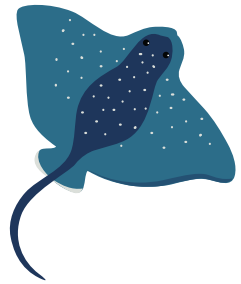
Octopus



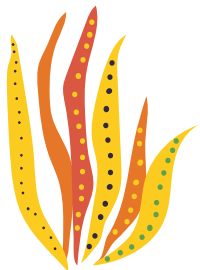
Puffer Fish



Shrimp



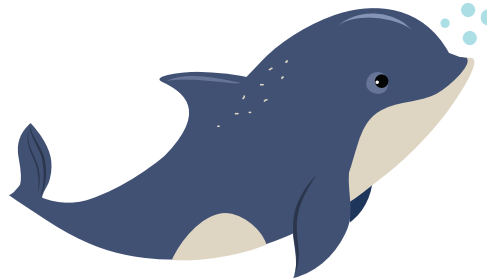
Stingray



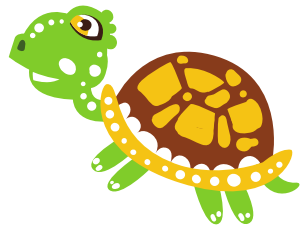
Seaweed



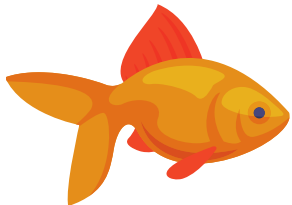
Guppy Fish



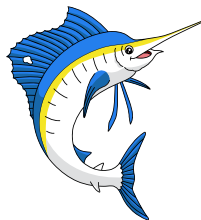
Dolphin



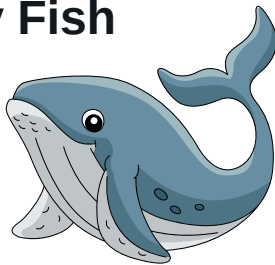
Sea Turtle



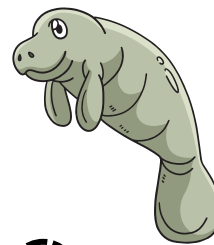
Goldfish



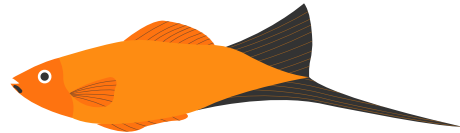
Sailfish



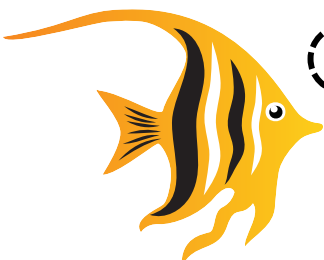
Whale



Manatee



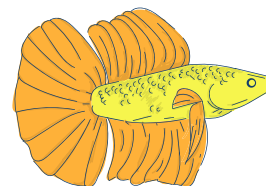
Swordtail



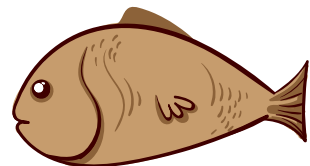
Angel Fish



Clown Loach



Betta Fish

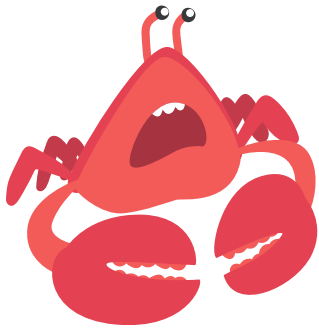


Brown Fish



Squid

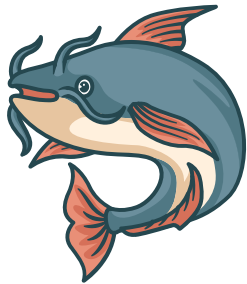
# AQUARIUM SCAVENGER HUNT



**Crab**



**Eel**



**Catfish**



**Shell**



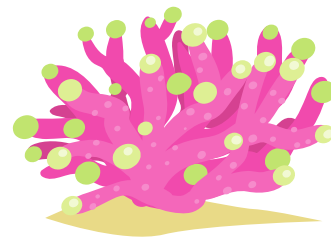
**Starfish**



**Penguin**



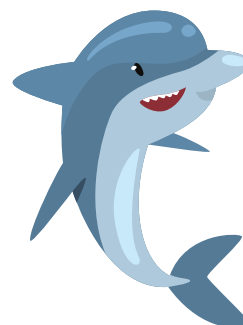
**Seahorse**



**Coral**



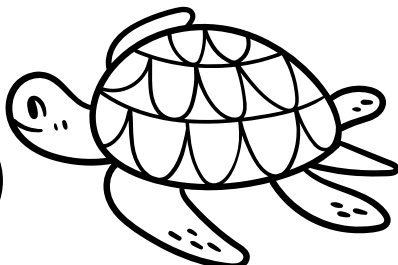
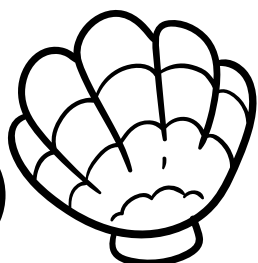
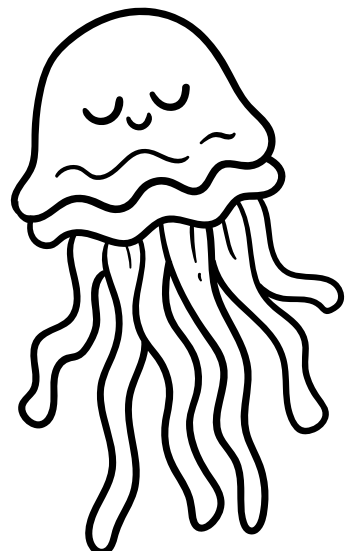
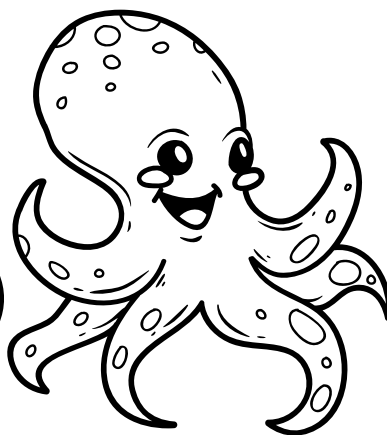
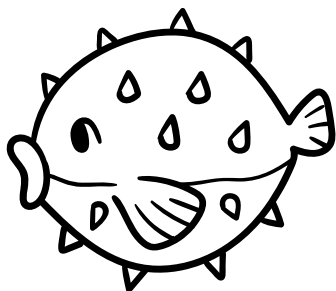
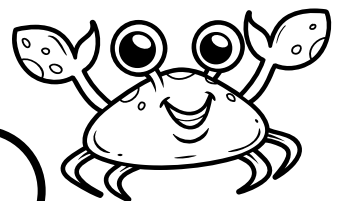
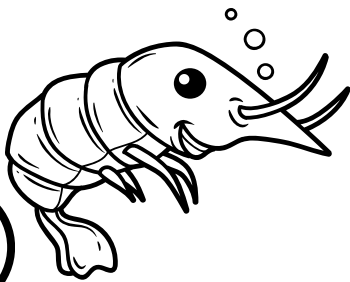
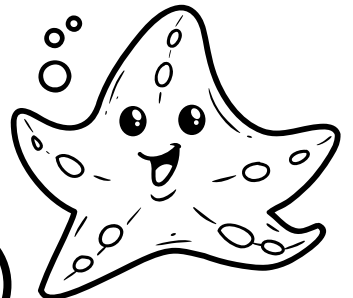
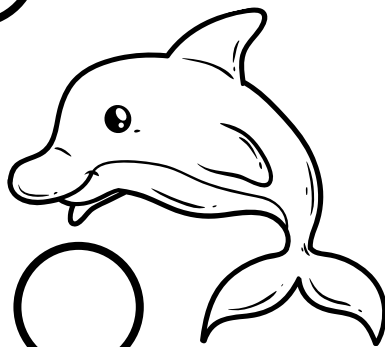
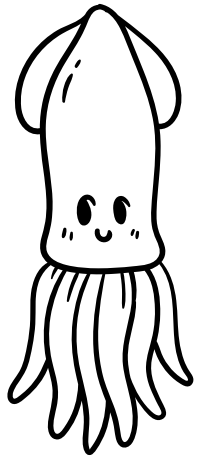
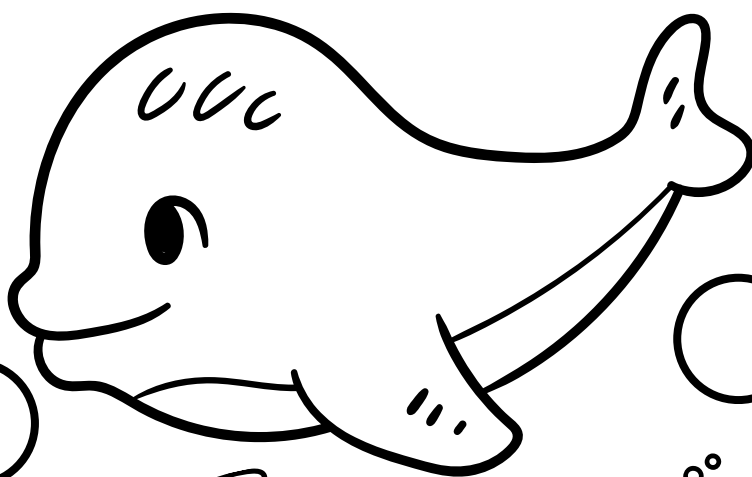
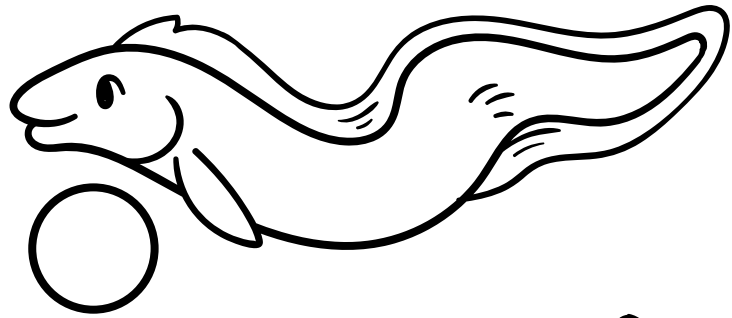
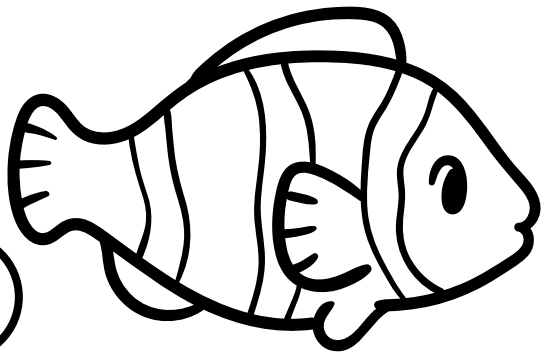
**Jellyfish**



**Dolphin**

# Aquarium

SCAVENGER  
HUNT



# Aquarium

## Scavenger Hunt



Locate an aquarium exhibit with clownfish.

crown-like head

Locate a fish that is known for its speed.

snakelike body

Locate a fish that is known for its intelligence.

stubby nose

Locate a fish with a spot on its head.

fan-shaped fin

Locate a fish with spiky fins.

scary-looking fish

Locate a fish with large, bulging eyes.

forked tail

Locate a fish with a sharp, pointed dorsal fin.

transparent body

Locate a fish with a slimy texture.

neon colors

Locate an aquarium exhibit with crabs.

wide mouth

# Aquarium Riddles

Riddles

## NEEDLEFISH

I'm a fish with a long, skinny body, with a needle-like snout, I'm quite speedy.

## SWORDFISH

I'm a fish with a long, sword-like bill, in the open ocean, I fulfill.

## CATFISH

I'm a fish with a whisker-like feeler, I use it to sense the prey I'm about to devour.

## PUFFER FISH

I am a fish with spiky skin, when I feel threatened, I puff and grin.

## OCTOPUS

I have eight long arms, but I'm not a spider. I live in the sea and I'm known as a clever transporter.

## CLOWNFISH

I'm a colorful fish, with a long body, in the coral reefs, I make my territory.

## WHALE

I'm the largest creature that the sea possesses. My size is impressive, and my songs are endless.

## DOLPHIN

I am known for my intelligence and grace, in the depths of the ocean, I find my space.

## SQUID

I have ten long arms, no backbone to be seen. I squirt ink when threatened, and I'm known to be quite keen.

## SEAHORSE

I'm a fish with a horse-like snout, in the rivers, I swim about.

## SHELL

I'm not a fish, but I live in the sea, with a protective cover, where I hide and be.

## EEL

I'm a fish with a long, twisting body, in rivers and streams, I'm a sight to see.

## PENGUIN

I'm a bird that loves to swim, in the icy waters, my chances are slim. wings in the air, but flippers in the sea.

## CORAL

I'm not a fish, but I'm found underwater, colorful and vibrant, I'm a true wonder. I provide a home for creatures so small.

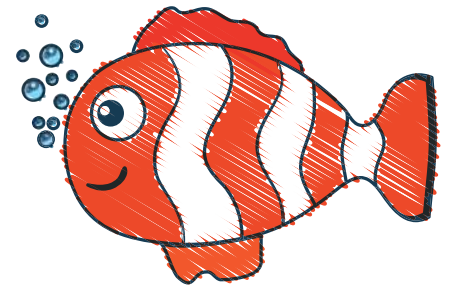
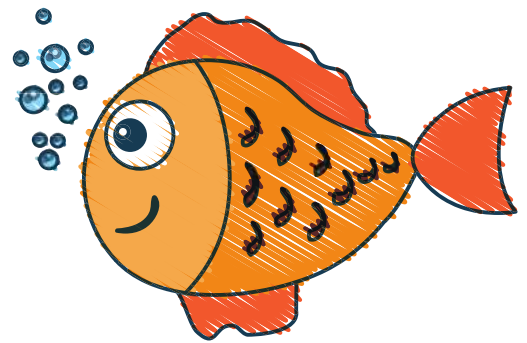
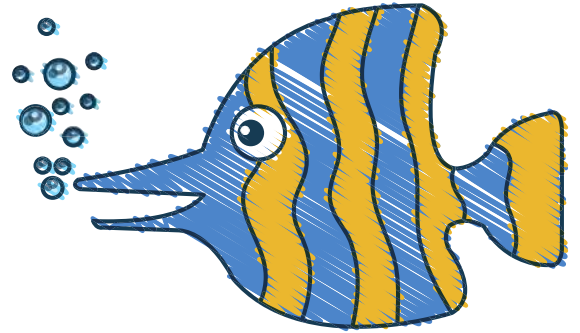
## STARFISH

I'm not a fish, but I live in the sea, with my five arms, I'm as happy as can be. I'm shaped like a star.

# FISH SCAVENGER

Find a fish...

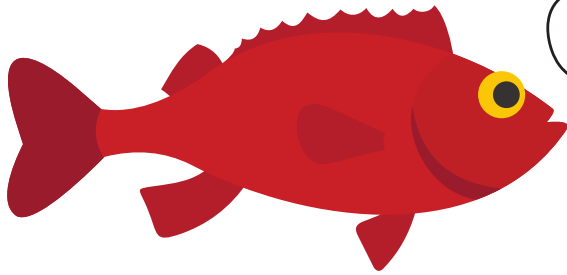
- ☆ with stripes
- ☆ with long fins
- ☆ that can walk on land
- ☆ with a transparent body
- ☆ with a long, flowing tail
- ☆ that glows in the dark
- ☆ with a round body shape
- ☆ that can camouflage itself
- ☆ that can change its color
- ☆ that is native to your region
- ☆ with a unique color pattern
- ☆ with a unique mouth shape
- ☆ that starts with the letter C
- ☆ with a bumpy texture on its body
- ☆ that has a unique pattern on its body



# UNDERWATER

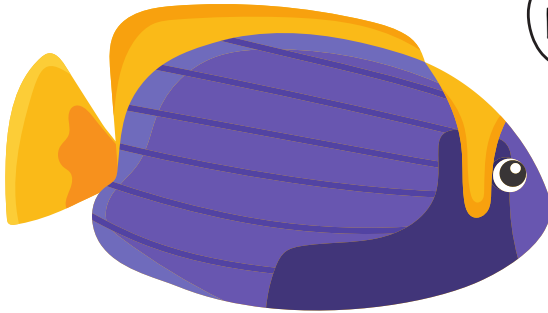
## SCAVENGER HUNT

Find a fish that is...



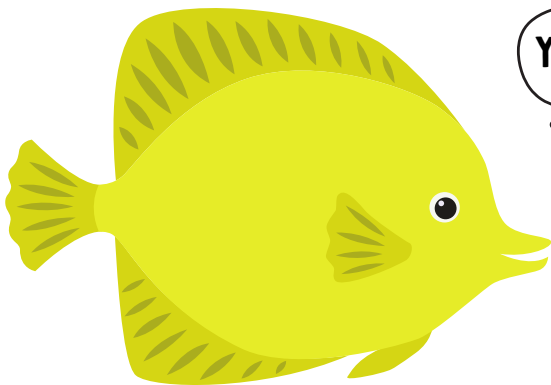
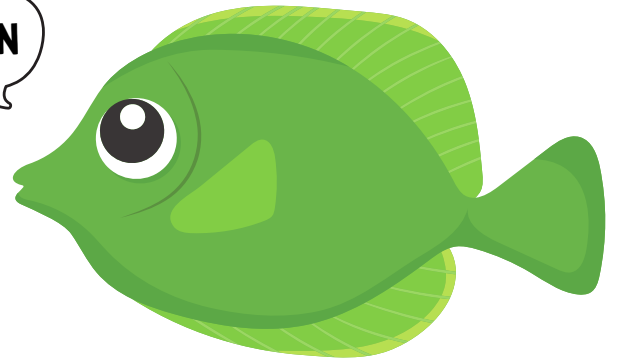
RED

BLUE



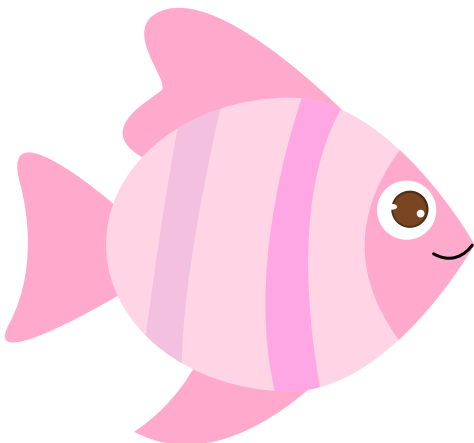
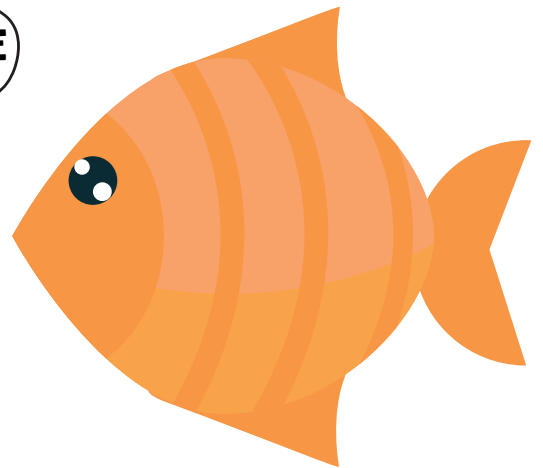
PURPLE

GREEN



YELLOW

ORANGE



PINK

GRAY

